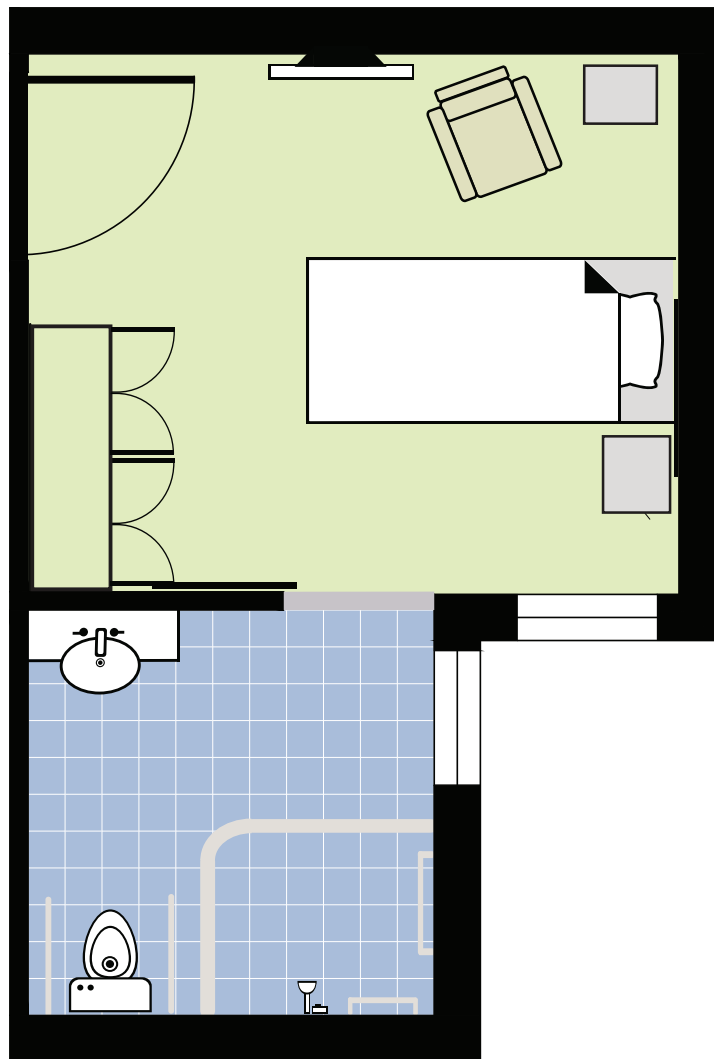


St Augustine's Aged Care

TYPICAL STANDARD FLOORPLAN



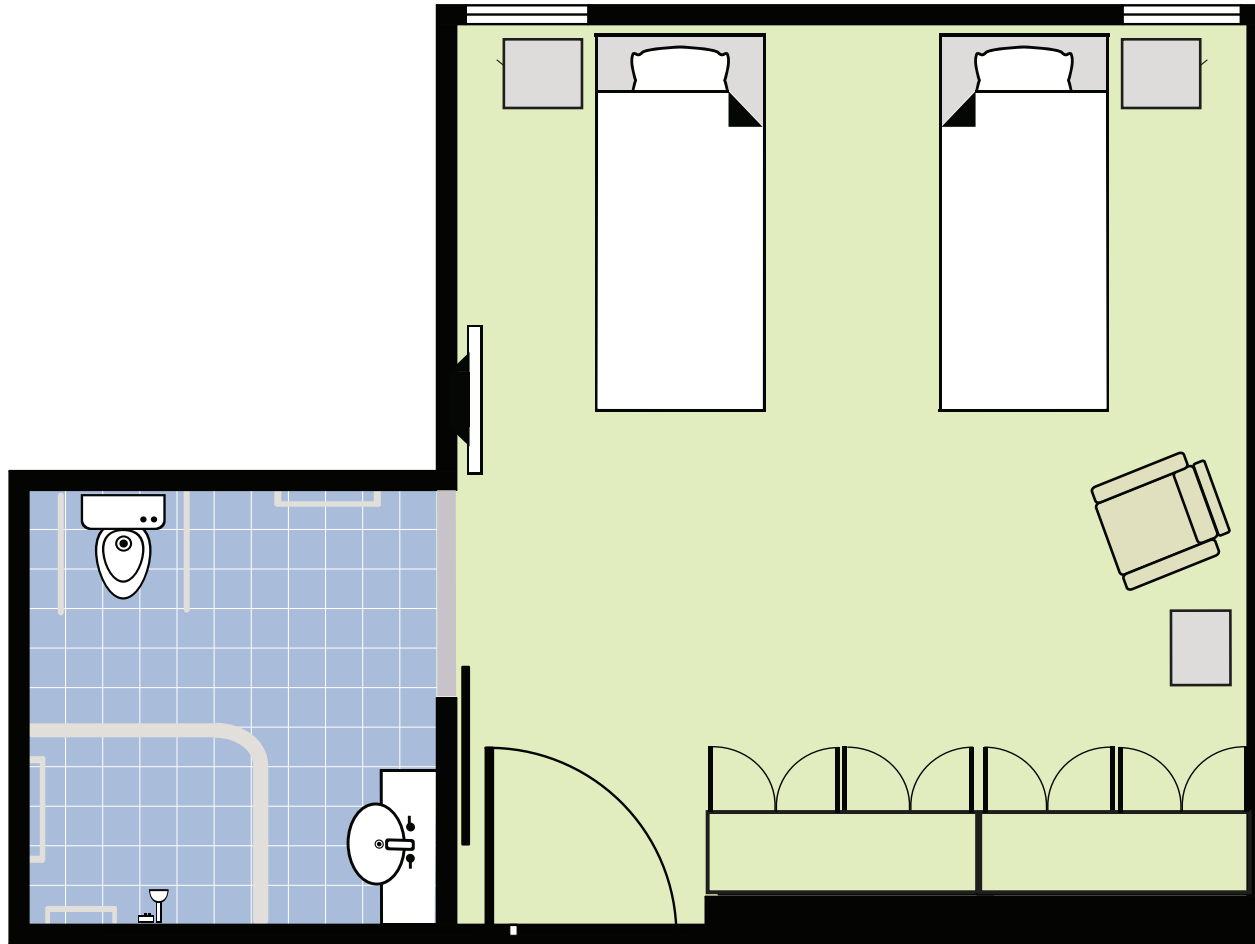
**Average
Room Size: 10.5 m²**

(Size does not include en-suite.)



St Augustine's Aged Care

TYPICAL SHARED FLOORPLAN



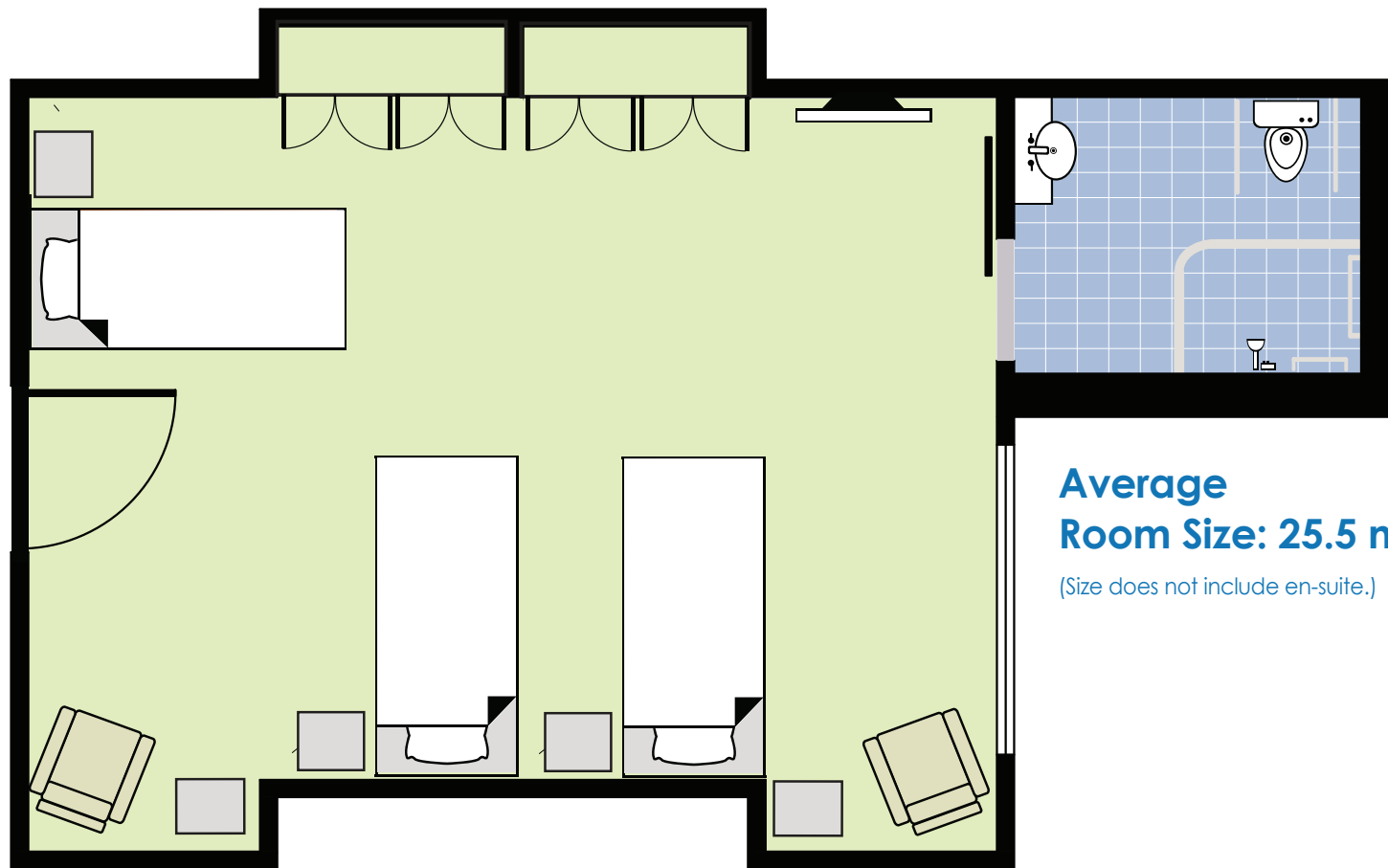
**Average
Room Size: 19.6 m²**

(Size does not include en-suite.)



St Augustine's Aged Care

TYPICAL MULTI-SHARED FLOORPLAN



**Average
Room Size: 25.5 m²**

(Size does not include en-suite.)

