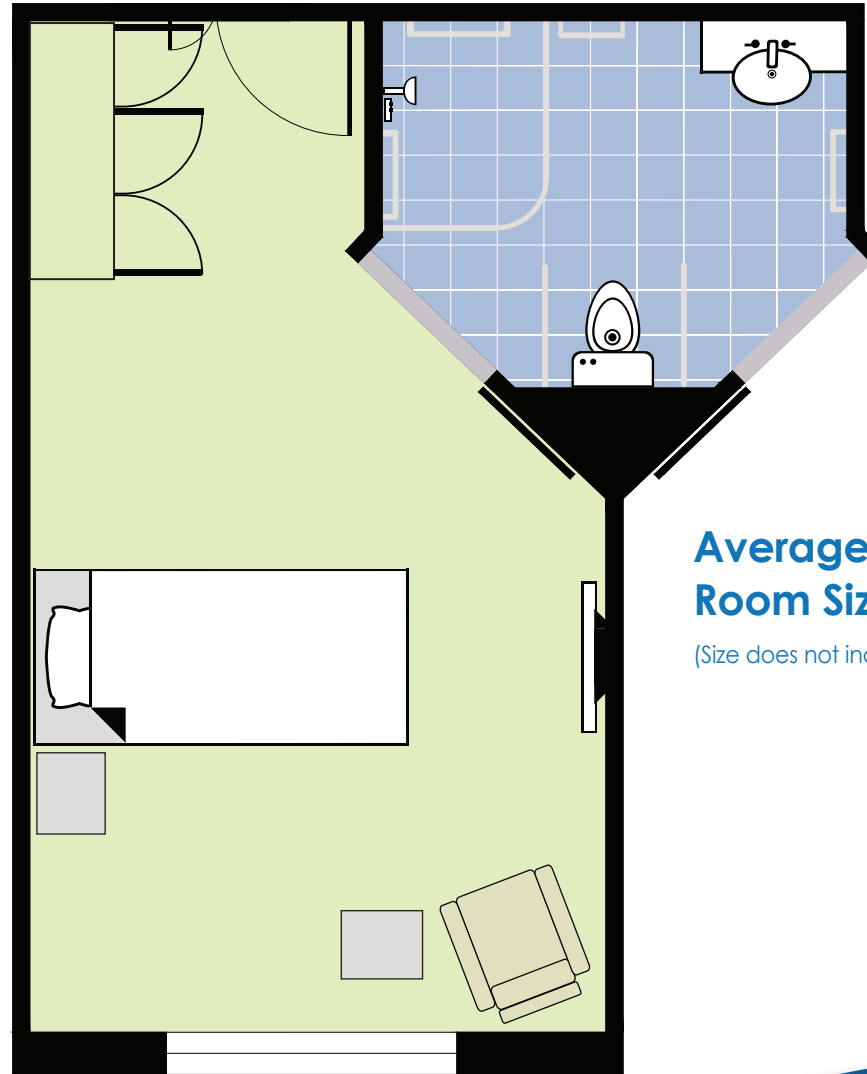


# Bodington

## TYPICAL STANDARD FLOORPLAN



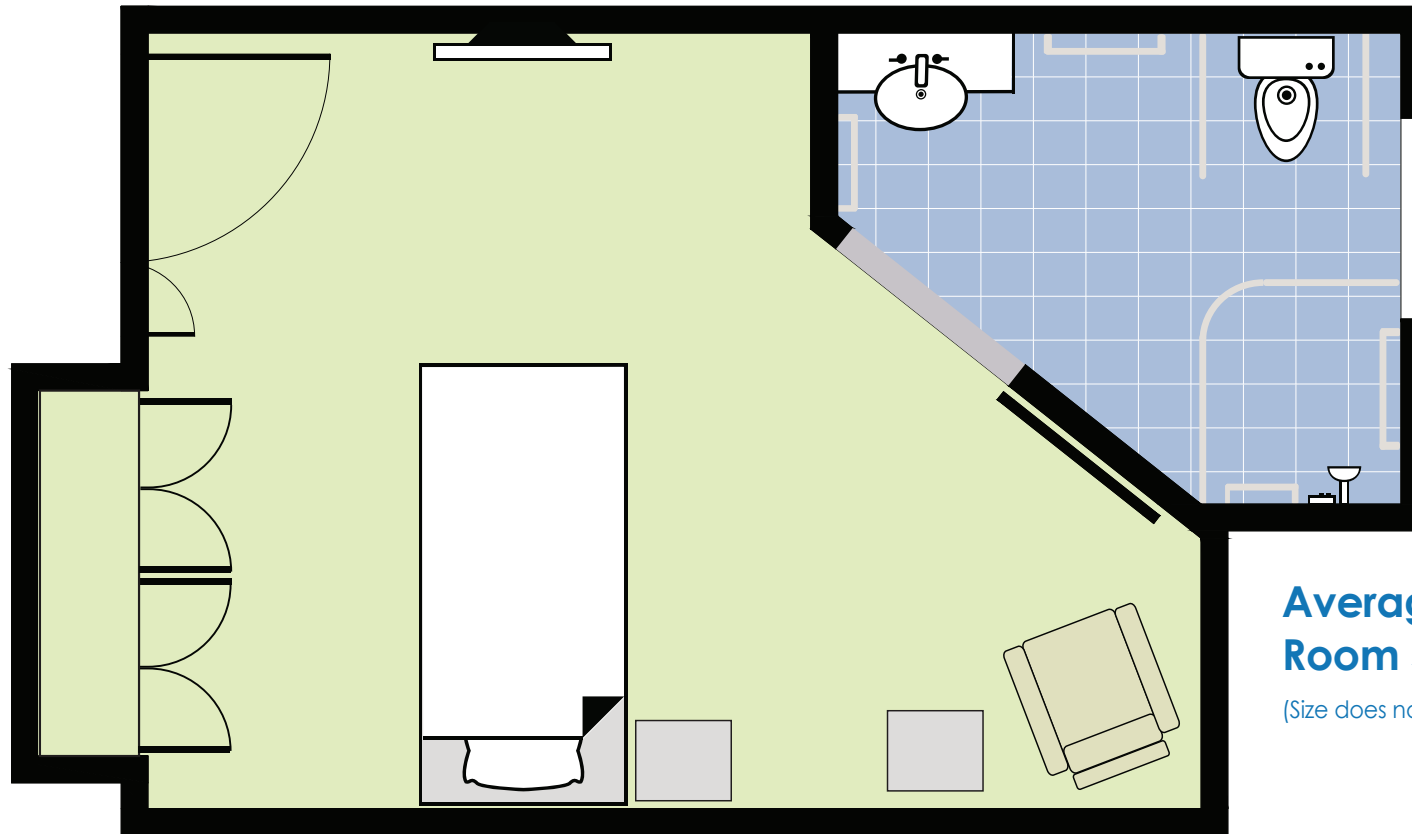
**Average  
Room Size: 18 m<sup>2</sup>**

(Size does not include en-suite.)



# Bodington

## TYPICAL STANDARD PLUS FLOORPLAN



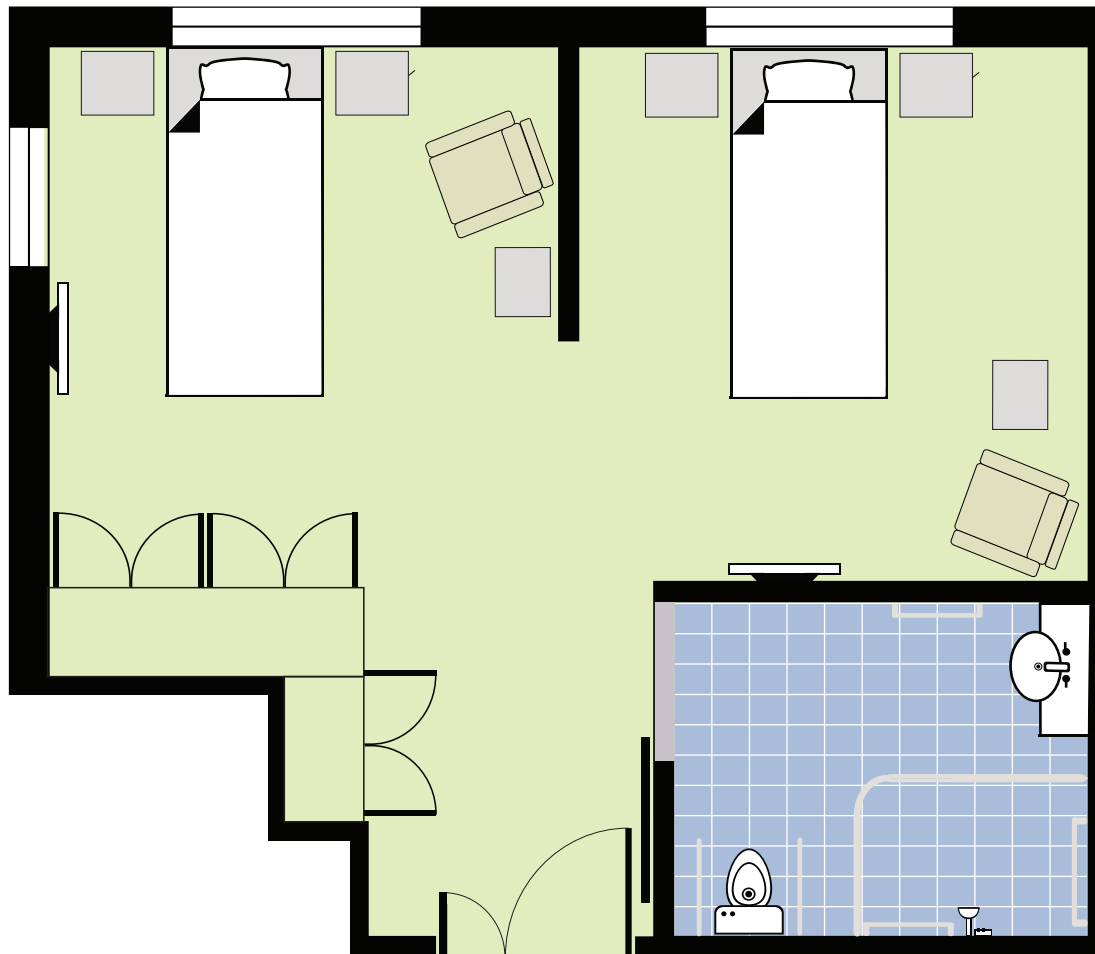
**Average  
Room Size: 18 m<sup>2</sup>**

(Size does not include en-suite.)



# Bodington

## TYPICAL SHARED FLOORPLAN



**Average  
Room Size: 33 m<sup>2</sup>**

(Size does not include en-suite.)

